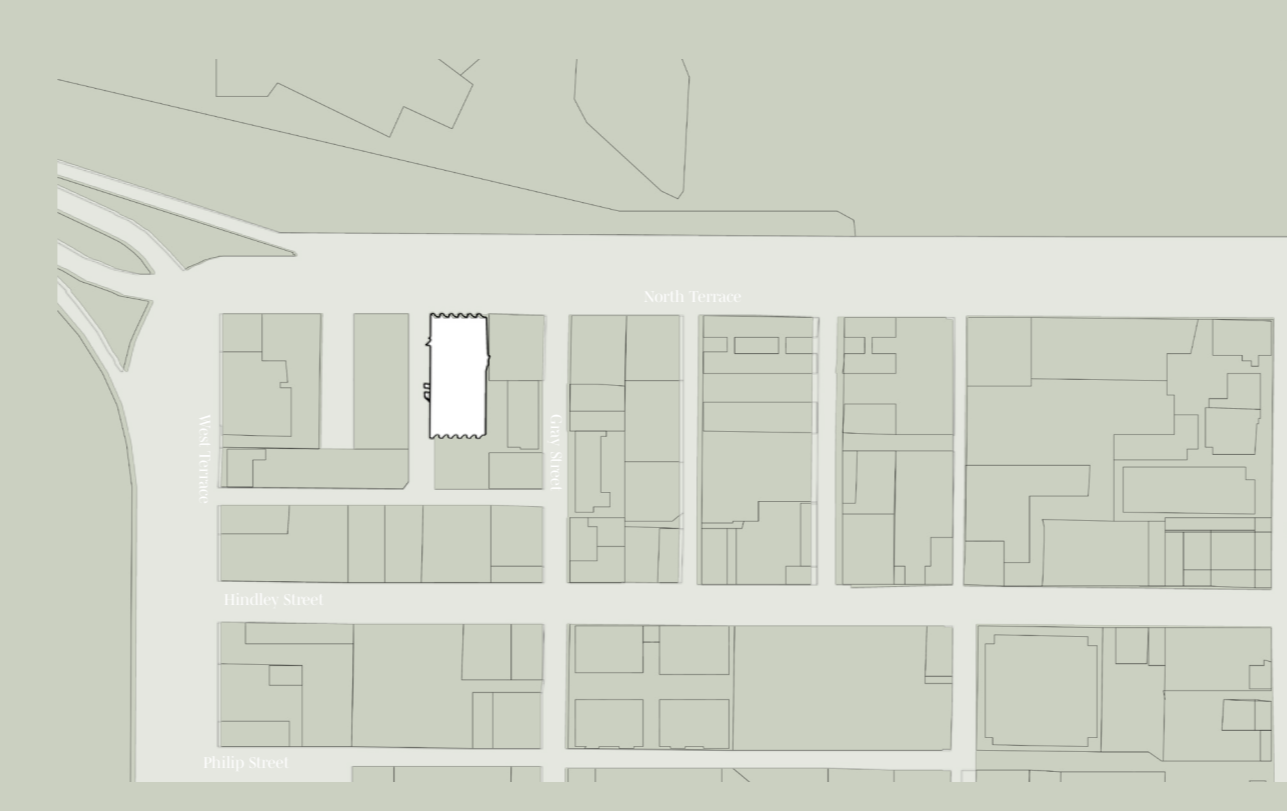


AVILION

Terrarium Steam House Seed Bank

Concrete form, rectilinear angles a basic facade. The public walk past 18a North Terrace, Adelaide without a second glance. A ghostlike figure rests in a bustling corner of the CBD, inconspicuous to the public eye and has no definition or meaning to anyone. Avilion plays with transparency, through form and program. Drawn from the street, a soft and organic, curved structure of glass cuts through angular, rigid concrete modules. A lush terrarium lives within the glass structure, providing rejuvenation and a sense of well being. Avilion challenges the individual idea of transparency, providing public or individual bathing facilities amongst the fresh greenery of the lush concrete. The modules consist of small steam rooms while visitors are encouraged to circulate around seed banks ultimately being reminded of the fragility of this earth and human impact in the hope of saving unique species of plants.

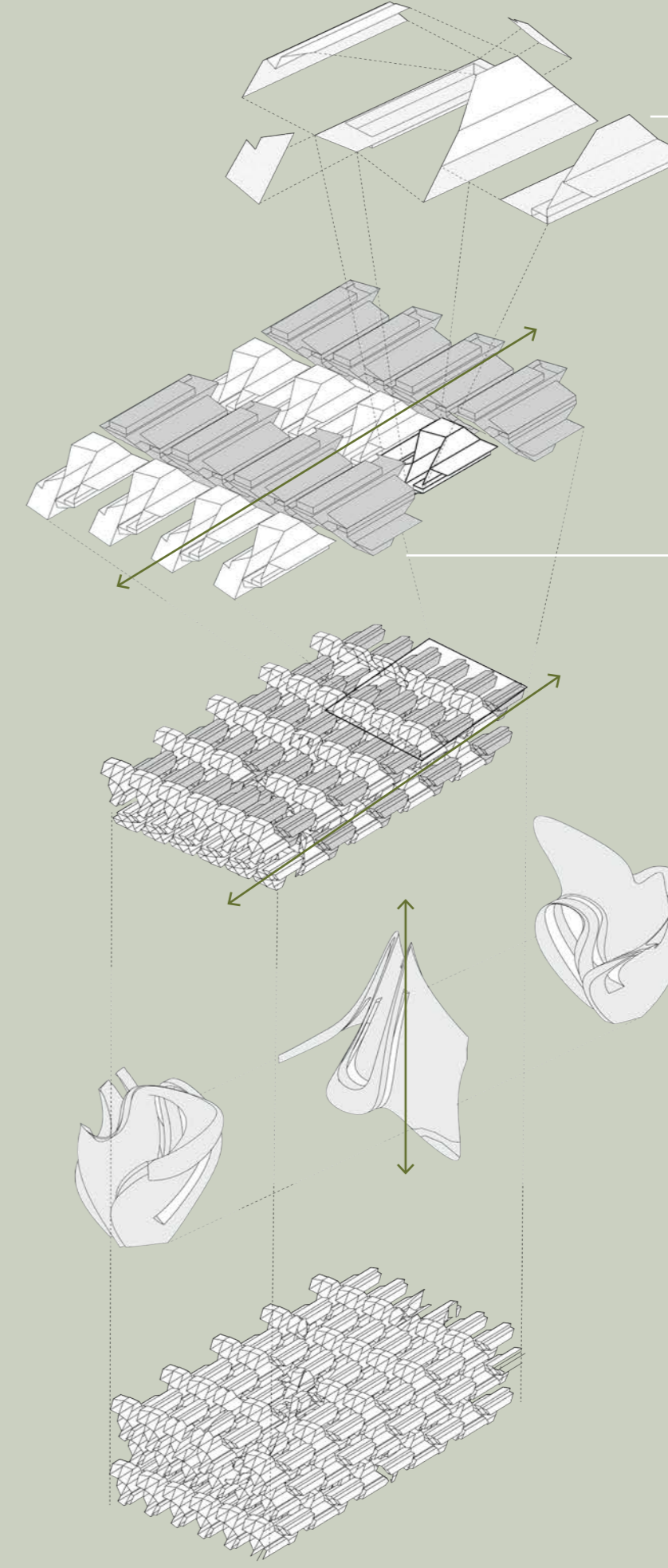


Multiple site impressions consisted of only line work. Some inspired by street scenes, plants and people at the nearby tram stop or cafes. The wire frame sketches have a translucency, only showing a frame of what already exists.

Physical modelling materials included wire, translucent mesh and irregular patterns, inspired by natural sketches. Painting strokes were long and continuous. Black or white as a prominent theme amongst the impressions.

A line sketch impression inspired the creation of the modules for Avilion, pulling regular shapes and angles from the sketch inspired by shadows created over the site.

The organic form was created from a painting based off sound from nearby transport. A continuous sound increasing and decreasing in sync with the traffic lights.



STEAM ROOM
Exploded view of single steam room module consisting of concrete and glass with a timber finished interior.

Modules arranged through the air-collectivity to together creating self sufficient stability and allowing stacking.

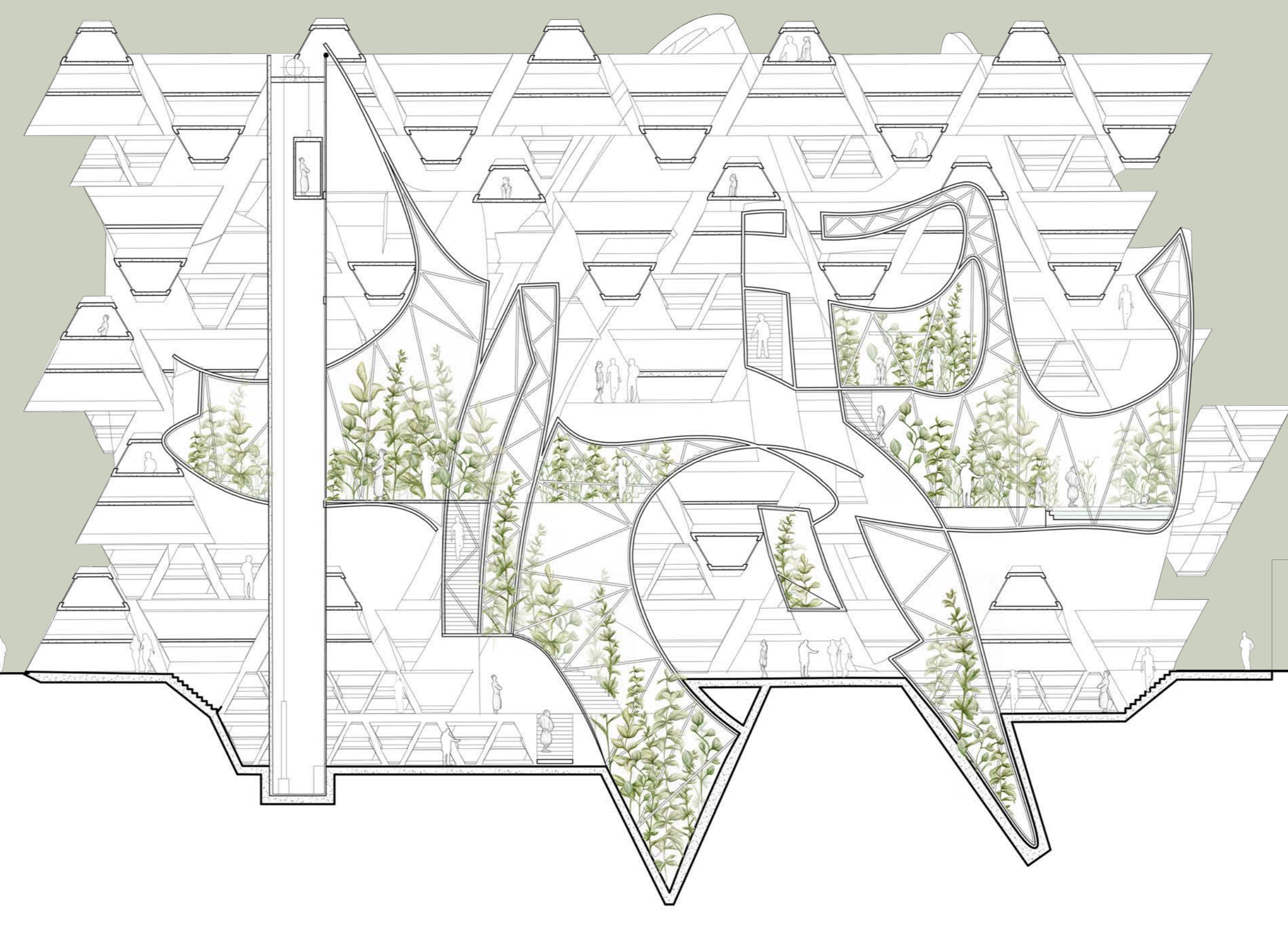
SEED BANK
Seed bank and steam room modules offset each other creating a circulation through seed bank modules to the desired steam room.

PROVIDING HORIZONTAL CIRCULATION

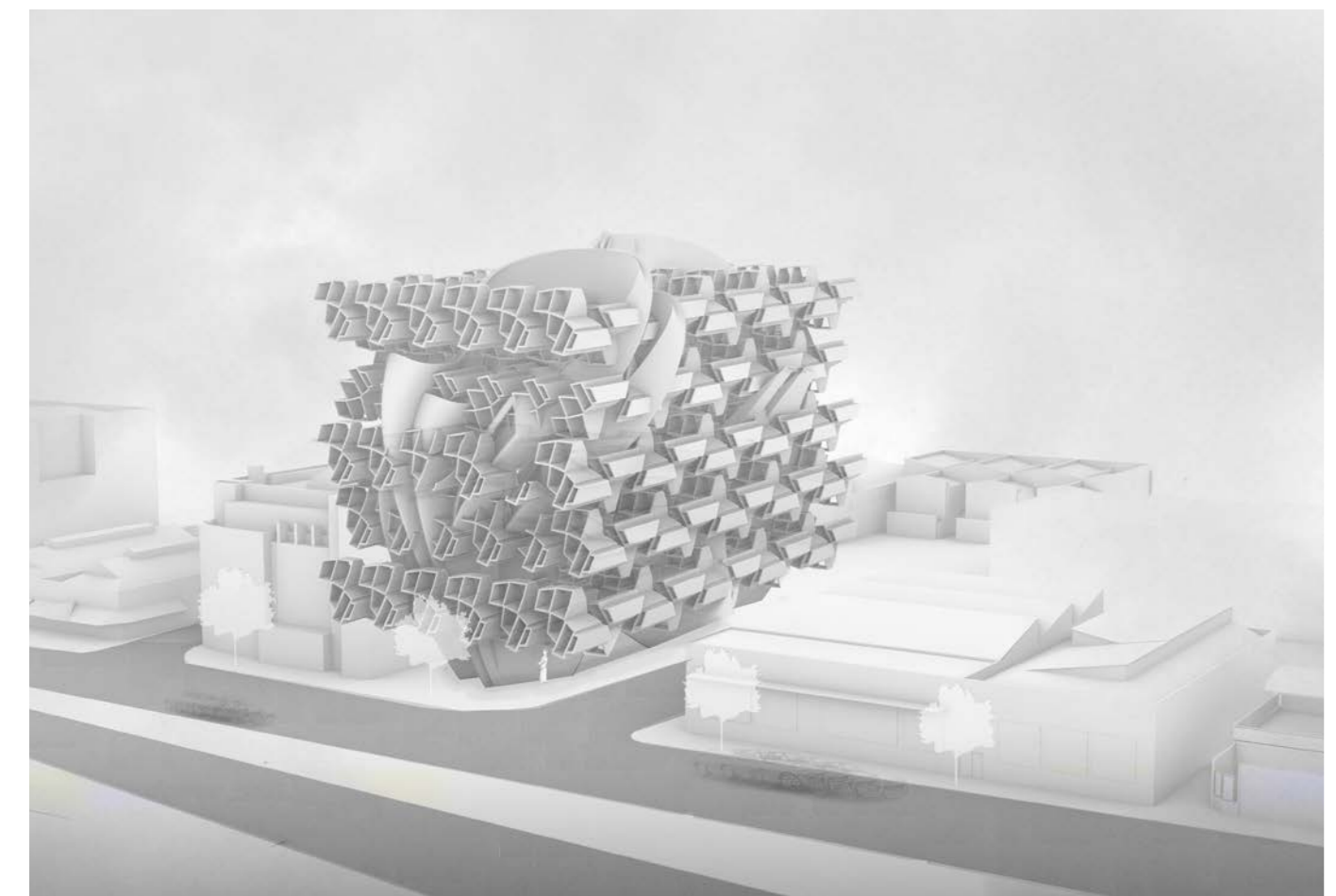
INDOOR GLASS TERRARIUM PROVIDING VERTICAL CIRCULATION

Organic form of glass cuts through regular, arranged modules. This space creates the terrarium and provides steam room users with a calming and serene experience before arriving at their saunas.

Ground floor modules and organic form cut the ground plane bringing visitors back to earth.



EAST SECTION 1:200



STREET VIEW EXTERIOR



SEED BANK TO STEAM ROOM INTERIOR



TERRARIUM INTERIOR



STEAM ROOM INTERIOR



FLOOR PLAN AT -2.00M 1:200



FLOOR PLAN AT +14.00M 1:200



FLOOR PLAN AT +24.00M 1:200



NORTH SECTION 1:100